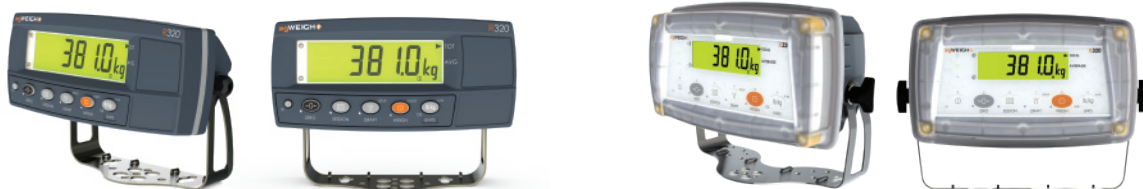




agWEIGHr Load Bars

- Narrowed steel load bar with epoxy coating
- Standard size 28in (Special sizes available on request)
- Capacity of 4400lbs with excellent load sensitivity
- Mounting holes on feet extend beyond top covers to simplify bolting down
- Waterproof M12 quick connectors for hassle free connections connect directly to R320 or X320
- Extendable, replaceable, and removable cables



agWEIGHr-R320

- 0.8in LCD display with LED backlight
- Tough, compact dust and waterproof ABS housing
- Stainless steel bracket for flexible mounting
- Animal weighing connected to agWEIGHr load bars

agWEIGHr-X320

- Dust, rain, hail, flood, urea, impact resistant and high-pressure hose down proof composite alloy housing
- Simple operation and user friendly for first time users
- Universal stand suitable for mounting on a desk, wall, post, pole, stump or even on machinery
- Capacitive keys, no worn out or sticking keys no buttons to fail
- Animal weighing connected to agWEIGHr load bars

SPECIFICATIONS

AGWR-700-250

Load Bar	
Capacity	4400lbs
Materials	Narrowed steel with epoxy coating
IP Rating	IP65
Cable Length	18ft
Length	28in
agWEIGHr R320	
Display	LED Backlit LCD with six 0.8in high digits with units and annunciators
Operating Environment	Temperature: -10° to +50C ambient (14° to 122° F) Humidity: <90% non-condensing
Environmental Rating	IP65
Materials	ABS Housing, Stainless Steel Stand
Stand	Stainless steel stand included
Power	12 VDC ON/OFF key with memory feature
Features	Livestock weighing, Drafting, Unit Switching
agWEIGHr X320	
Display	LED Backlit LCD with six 0.8in high digits with units and annunciators
Ambient Temp	-Temperature: -10° to +50C ambient (14° to 122° F) Humidity: <90% non-condensing
Environmental Rating	IP68/IP69K
Materials	PC + Polyester alloy, PBT Housing, Stainless Steel Stand
Power	12 VDC or 90-260 VAC ON/OFF key with memory feature
Features	Livestock weighing, Drafting, Unit Switching

*Special sizes, custom indicators, and firmware available on request.



Fabricated in Illinois, USA



Southern IL Scale & Construction Inc
430 W South Ave Noble,
Illinois 62868

Phone: 1(800)441-1794
Email: sales@southernilscale.com

www.southernilscale.com



Contact Us